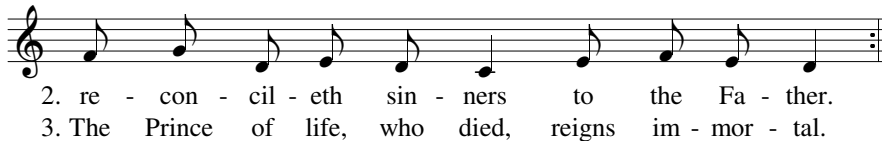
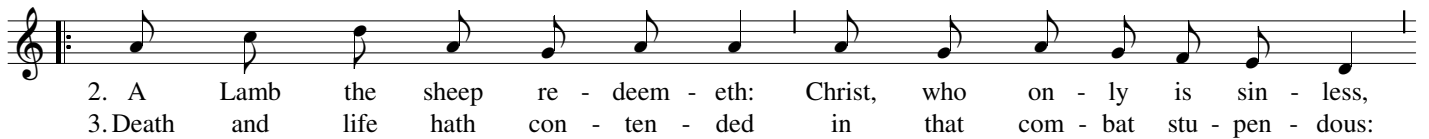
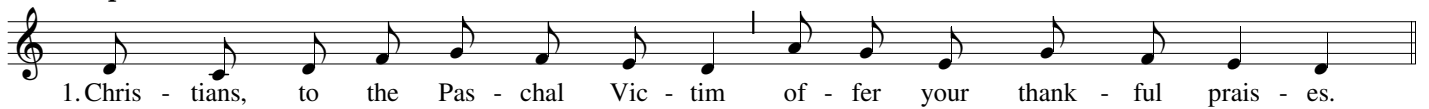


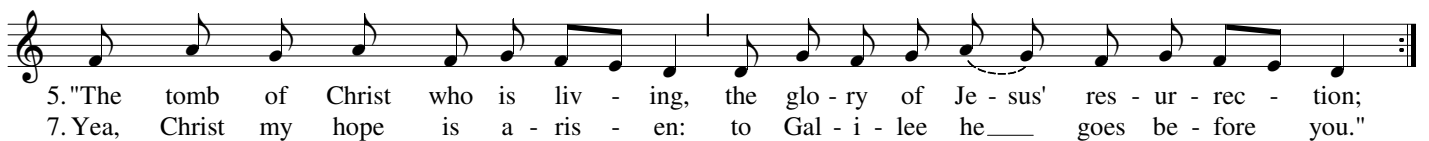
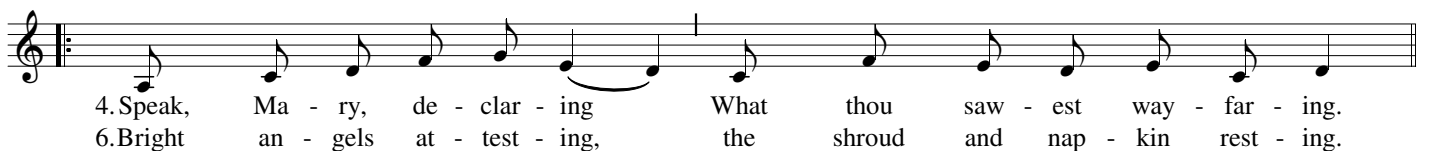
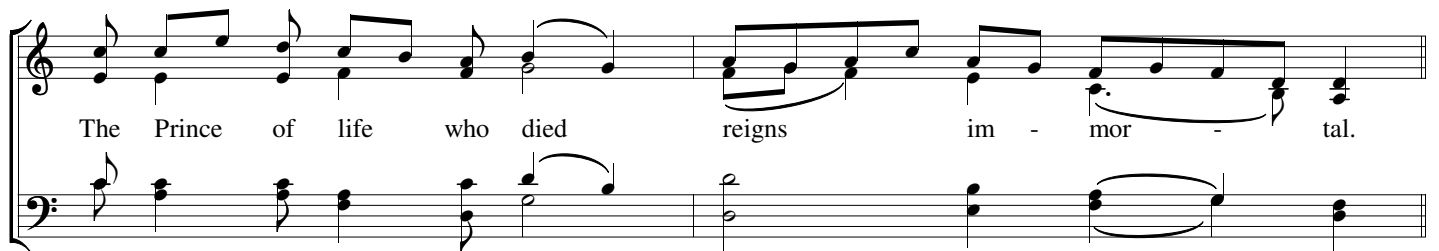
EASTER SUNDAY: THE RESURRECTION OF THE LORD

21-c. Sequence

a capella



Alternate setting: verse 3



Text: *Victimae Paschali Laudes*, Wipo of Burgundy (c. 995-c. 1048); tr. from the *Roman Missal*, © 1964 USCCB.

Tune: *Victimae Paschali Laudes* (Irregular); Chant, Mode I. Alternate settings by Brian Michael Page (b. 1964), © 2016 Christus Vincit Music.

Creative Commons License (ND-BY 3.0). cvmusic.christusvincit.com

Alternate setting: verses 6-7

6. Bright an - gels at - test - ing, the shroud and nap - kin rest - ing.

This system contains the musical notation for the first line of verse 6. It features a treble and bass staff with a vocal line and a piano accompaniment. The lyrics are: "6. Bright an - gels at - test - ing, the shroud and nap - kin rest - ing."

7. Yea, Christ my hope is a - ris - en: to Gal - i - lee he goes be - fore you."

This system contains the musical notation for the second line of verse 7. It features a treble and bass staff with a vocal line and a piano accompaniment. The lyrics are: "7. Yea, Christ my hope is a - ris - en: to Gal - i - lee he goes be - fore you."

8. Christ in - deed from death is ris - en, our new life ob - tain - ing.
Have mer - cy, Vic - tor King, ev - er reign - ing. A - men, al - le - lu - ia!

This system contains the musical notation for the third line of verse 8. It features a treble and bass staff with a vocal line and a piano accompaniment. The lyrics are: "8. Christ in - deed from death is ris - en, our new life ob - tain - ing. Have mer - cy, Vic - tor King, ev - er reign - ing. A - men, al - le - lu - ia!"

Alternate setting: Amen, alleluia!

A - - - men, al - le - lu - ia!
rall.

This system contains the musical notation for the final section, "Amen, alleluia!". It features a treble and bass staff with a vocal line and a piano accompaniment. The lyrics are: "A - - - men, al - le - lu - ia! *rall.*"