

368. RESPONSORIAL PSALM

℞. Since my moth - er's womb, you have been my strength.

∇ Psalm 71

1. a In you, O Lord, I take refuge;
b* In your justice rescue me, and deliver me;

2. a Be my rock of refuge,
b* for you are my rock and my fortress.

3. a For you are my hope, O Lord,
b* On you I depend from birth;

4. a My mouth shall declare your justice,
b* O God, you have taught me from my youth,

1. a let me never be put to shame. —
b* incline your ear to me and save me.

2. a a stronghold to give me safety,
b* O God, rescue me from the hand of the wicked.

3. a my trust, O God, from my youth. —
b* from my mother's womb you are my strength. —

4. a day by day your salvation. —
b* and till the present I proclaim your wondrous deeds. —

* Alternate SATB setting: "b" part of versicles

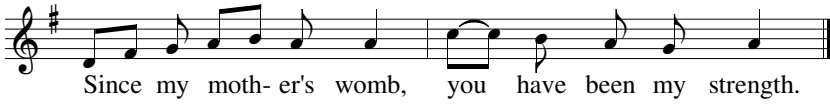
1b. In your justice rescue me, and deliver me; — incline your ear to me and save me.

2b. for you are my rock and my fortress. O God, rescue me from the hand of the wicked.

3b. On you I depend from birth; — from my mother's womb you are my strength.

4b. O God, you have taught me from my youth, and till the present I proclaim your wondrous deeds. —

368. RESPONSORIAL PSALM



Since my moth- er's womb, you have been my strength.

Text: *Lectionary for Mass*, © 1969, 1981, 1997 ICEL.

Music: Brian Michael Page (b. 1964), © 2015 Christus Vincit Music. Creative Commons License (CC BY-ND 3.0).
cvmusic.christusvincit.com