

ELEVENTH SUNDAY OF THE YEAR

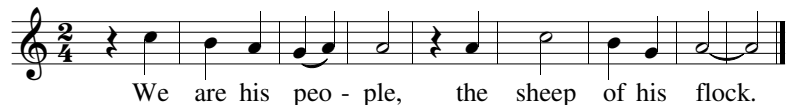
For the congregation:

42-a. Introit



Music: Brian Michael Page (b. 1964), © 2018 Christus Vincit Music.
Creative Commons License (CC BY-ND 3.0). cvmusic.christusvincit.com

42-b. Responsorial Psalm (A)



Text: *Lectionary for Mass*, © 1969, 1981, 1997 ICEL.
Music: Brian Michael Page (b. 1964), © 2016 Christus Vincit Music.
Creative Commons License (CC BY-ND 3.0). cvmusic.christusvincit.com

42-c. Responsorial Psalm (B) or Gradual (B)



Text: *Lectionary for Mass*, © 1969, 1981, 1997 ICEL.
Music: Brian Michael Page (b. 1964), © 2014 Christus Vincit Music.
Creative Commons License (CC BY-ND 3.0). cvmusic.christusvincit.com

42-d. Responsorial Psalm (C)



Text: *Lectionary for Mass*, © 1969, 1981, 1997 ICEL.
Music: Brian Michael Page (b. 1964), © 2015 Christus Vincit Music.
Creative Commons License (CC BY-ND 3.0). cvmusic.christusvincit.com

42-e. Gradual (AC)



Music: Brian Michael Page (b. 1964), © 2017 Christus Vincit Music. Creative Commons License (CC BY-ND 3.0).
cvmusic.christusvincit.com

42-f. Alleluia ("Pange Lingua")



Music: Brian Michael Page (b. 1964), based on *Pange Lingua Gloriōsi*, Chant, Mode III;
© 2018 Christus Vincit Music. Creative Commons License (CC BY-ND 3.0). cvmusic.christusvincit.com

42-g. Offertory



Music: Brian Michael Page (b. 1964), © 2017 Christus Vincit Music.
Creative Commons License (CC BY-ND 3.0). cvmusic.christusvincit.com

42-h. Communion

One thing I ask of the Lord, this I seek:
that I may dwell in the house of the Lord all the days of my life.

The image shows two staves of musical notation in G major (one sharp). The first staff contains the melody for the first line of the lyrics, and the second staff contains the melody for the second line. The music is written in a simple, melodic style with quarter and eighth notes.

Music: Brian Michael Page (b. 1964), © 2017 Christus Vincit Music. Creative Commons License (CC BY-ND 3.0).
cvmusic.christusvincit.com