

67. RESPONSORIAL PSALM (C)

May be sung in SATB

Be with me, Lord, when I am in trou - ble.

Psalm 91

1. a You who dwell in the shelter of the Most High,
 b* say to the Lord: "My ref - uge and for - tress,

2. a No e - vil shall be - fall you,
 b* for to his angels he has given com - mand a - bout you,

3. a Up - on their hands they shall bear you up,
 b* You shall tread upon the asp and the vi - per,

4. a Be - cause he clings to me, I will de - liv - er him,
 b* He shall call upon me, and I will answer (†him;)
 I will be with him in dis - tress:

1. a who abide in the shadow of the Al - might - y,
 b* my God in whom I trust."

2. a nor afflic - tion come near your tent.
 b* that they guard you in all your ways.

3. a lest you dash your foot a - gainst the stone.
 b* you shall trample down the lion and the drag - on.

4. a I will set him on high because he ack - now - ledg - es my name.
 b* I will deliver him and glo - ri - fy him.

* Alternate SATB setting: "b" part of versicles.

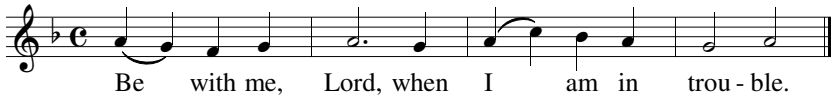
1b. say to the Lord: "My ref - uge and fortress, my God in whom I trust."

2b. for to his angels he has given com - mand a - bout you, that they guard you in all your ways.

3b. You shall tread upon the asp and the viper; you shall trample down the li - on and the dragon.

4b. He shall call upon me and I will answer him; I will be with him in dis - tress; I will deliver him and glo - ri - fy him.

67. RESPONSORIAL PSALM (C)



Text: *Lectionary for Mass*, © 1969, 1981, 1997 ICEL.

Music: Brian Michael Page (b. 1964), © 2017 Christus Vincit Music. Creative Commons License (CC BY-ND 3.0)
. cvmusic.christusvincit.com