

## WEEKDAYS AFTER THE EPIPHANY

*In places where the Epiphany is celebrated on the fixed date of January 6, Monday-Saturday is replaced by the dates of January 7-12, respectively.*

IN - See #9d or #13a

### 16a. Responsorial Psalm (Monday)

℣ *Psalm 2: 8*

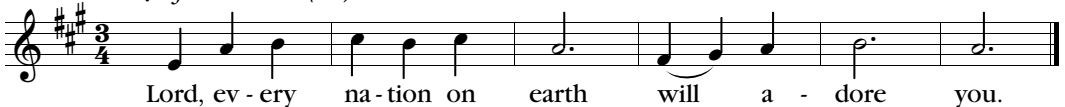


Text: *Lectionary for Mass*, © 1969, 1981, 1997 ICEL.

Music: Brian Michael Page (b. 1964), © 2021 Christus Vincit Music. [cvmusic.christusvincit.com](http://cvmusic.christusvincit.com)  
Creative Commons License (CC BY-ND 4.0)

### 16b. Responsorial Psalm (Tuesday), 16c. (Wednesday) and 16d. (Thursday)

℣ *cf. Psalm 72 (71): 11*



Text: *Lectionary for Mass*, © 1969, 1981, 1997 ICEL.

Music: Brian Michael Page (b. 1964), © 2016 Christus Vincit Music. [cvmusic.christusvincit.com](http://cvmusic.christusvincit.com)  
Creative Commons License (CC BY-ND 4.0)

RP - Friday, see #54b; Saturday, see #14e

### 16e. Alleluia

℣

excerpted from *Divinum Mysterium*, Chant, Mode V



Music: Brian Michael Page, b. 1964, © 2017 Christus Vincit Music. [cvmusic.christusvincit.com](http://cvmusic.christusvincit.com)  
Creative Commons License (CC BY-ND 4.0).

AL - Wednesday, see #13c

OF - See #9l or #15d

CO - See #9p or #15e, except Tuesday, see #66g