

The Most Holy Body and Blood of Christ - Sequence (Optional)

a capella



1. Laud, O Si - on, thy sal - va - tion, Laud with hymns of ex - ul - ta - tion,
2. Bring him all the praise thou know - est, He is more than thou be - stow - est,
(See footnotes)



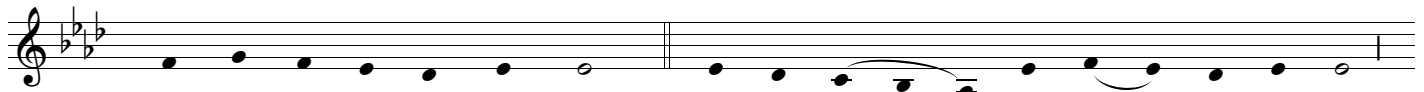
1. Christ, thy King and shep - herd true. 3. Spe - cial theme for glad thanks giv - ing
2. Nev - er canst thou reach his due. 4. From his hands of old par - ta - en,



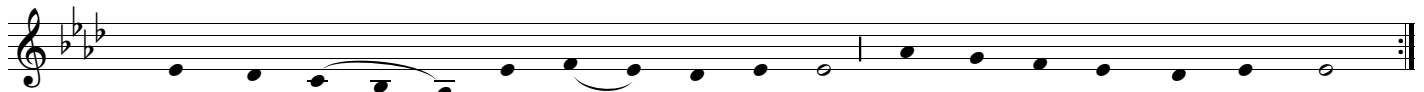
3. Is the quick - 'ning and the liv - ing Bread to - day be - fore thee set.
4. As we know by faith un - sha - ken, Where the twelve at sup - per met.



5. Full and clear ring out thy chant - ing, Joy nor sweet - est grace be want - ing,
7. Here the new law's new ob - la - tion, By the new king's rev - e - la - tion,



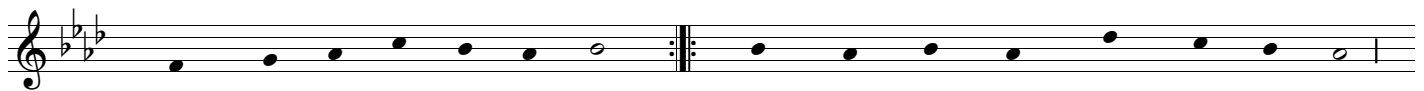
5. From thy heart let prais - es burst: 6. For to - day the feast is hold - en,
7. Ends the form of an - cient rite: 8. Now the new the old ef - fa - ces,



6. When the in - sti - tu - tion old - en Of that sup - per was re - heard.
8. Truth a - way the shad - ow cha - ses, Light dis - pels the gloom of night.



9. What he did at sup - per seat - ed, Christ or - dained to be re - peat - ed,
10. And his rule for guid - ance ta - king, Bread and wine we hal - low, ma - king



9. His mem - o - rial ne'er to cease: 11. This the truth each Chris - tian learn - eth,
10. Thus our sac - ri - fice of peace. 12. Sight hath failed, nor thought con - ceiv - eth,



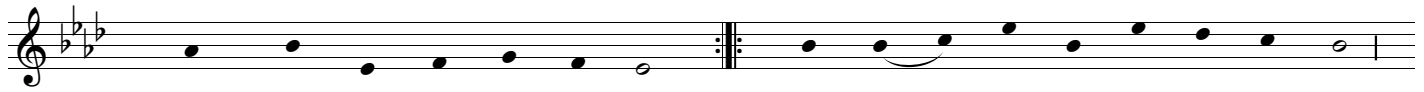
11. Bread in - to his flesh he turn - eth, To his pre - cious blood the wine.
12. But a daunt - less faith be - liev - eth, Rest - ing on a pow'r di - vine.

* An alternate SATB setting for the even-numbered versicles and the ending "Amen, alleluia!" begins on page 3.

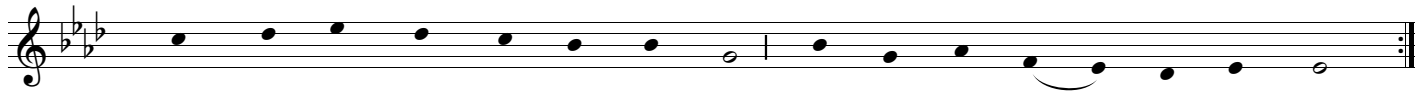
** An abridged version of this sequence begins with verse 21 (page 2; alternate SATB even numbered versicles, page 4).



13. Here be - neath these signs are hid - den Price-less things to sense for - bid - den;
 14. Blood is poured and flesh is bro - ken, Yet in eith - er won - drous to - ken



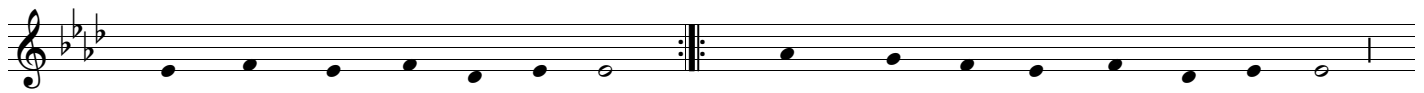
13. Signs, not things are all we see. 15. Who - so of this food par - ta - keth,
 14. Christ en - tire we know to be. 16. Thou - sands are, as one, re - ceiv - ers,



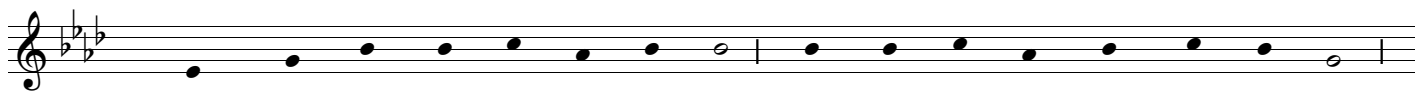
15. Does not rend the Lord nor break - eth; Christ is whole to all that taste:
 16. One, as thou - sands of be - liev - ers, Eats of him who can - not waste.



17. Bad and good the feast are shar - ing, Of what di - vers dooms pre - par - ing,
 18. Life to these, to those dam - na - tion, See how like par - ti - ci - pa - tion



17. End - less death, or end - less life. 19. When the Sac - ra - ment is brok - en,
 18. Is with un - like is - sues rife. 20. Nought the pre - cious gift di - vid - eth,

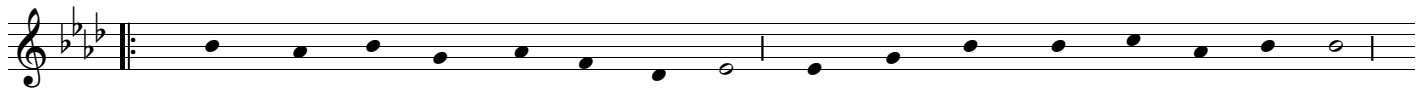


19. Doubt not, but be - lieve 'tis spo - ken, That each sev - ered out - ward to - ken
 20. Break - ing but the sign be - tid - eth Je - sus still the same a - bid - eth,



19. Doth the ver - y whole con - tain.
 20. Still un - bro - ken does re - main.

Abridged form of the Sequence begins here



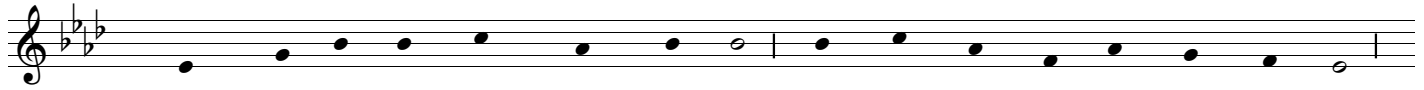
21. Lo! the an - gel's food is giv - en To the pil - grim who has striv - en;
 22. Truth the an - cient types ful - fil - ling, Is - aac bound, a vic - tim wil - ling



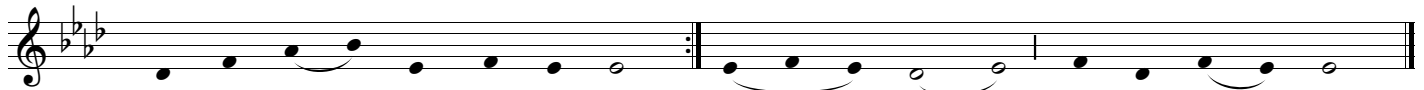
21. See the chil - dren's bread from heav - en, Which on dogs may not be spent.
 22. Pas - chal Lamb, its life - blood spill - ing, Man - na to the fa - thers sent.



23. Ver - y Bread, good shep - herd, tend us, Je - su, of thy love be - friend us,
 24. Thou who all things canst and know - est. Thou on earth such food be - stow - est,



23. Thou re - fresh - eth, thou de - fend - eth, Thine e - ter - nal good - ness send - eth
 24. Grant us with thy saints, though low - est. Where the heav'n - ly feast thou show - est,



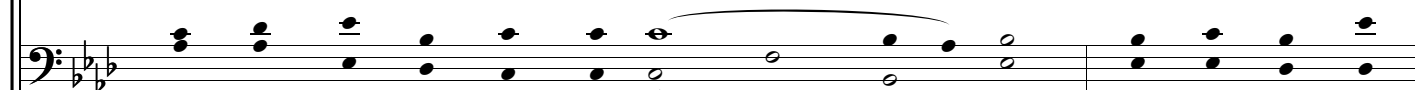
23. In the land of life to see.
 24. Fel - low heirs and guests to be. A - men, al - le - lu - ia!

Alternate SATB setting: even-numbered verses and Amen, alleluia!

2-18



2. Bring him all the praise thou know - est, He is more than
 4. From his hands of old par - ta - en, As we know by
 6. For to - day the feast is hold - en, When the in - sti -
 8. Now the new the old ef - fa - ces, Truth a - way the
 10. And his rule for guid - ance ta - king, Bread and wine we
 12. Sight hath failed, nor thought con - ceiv - eth, But a daunt - less
 14. Blood is poured and flesh is bro - ken, Yet in eith - er
 16. Thou - sands are, as one, re - ceiv - ers, One, as thou - sands
 18. Life to these, to those dam - na - tion, See how like par -



2. thou be - stow - est, Nev - er canst thou reach his due.
 4. faith un - sha - ken, Where the twelve at sup - per met.
 6. tu - tion old - en Of that sup - per was re - hearsd.
 8. shad - ow cha - ses, Light dis - pels the gloom of night.
 10. hal - low, ma - king Thus our sac - ri - fice of peace.
 12. faith be - liev - eth, Rest - ing on a pow'r di - vine.
 14. won - drous to - ken Christ en - tire we know to be.
 16. of be - liev - ers, Eats of him who can - not waste.
 18. ti - ci - pa - tion Is with un - like is - sues rife.



¶ 20-24 (*Abridged Sequence begins at ¶ 21-22*)

20. Break - ing but the sign be - tid - eth Je - sus still the
 22. Truth the an - cient types ful - fil - ling, Is - aac bound, a
 24. Thou who all things canst and know - est. Thou on earth such

20. same a - bid - eth, Je - sus still the same a - bid - eth,
 22. vic - tim wil - ling Pas - chal Lamb, its life - blood spill - ing,
 24. food be - stow - est, Grant us with thy saints, though low - est.

Repeat bars apply to verse 24 only

20. Still un - bro - ken does re - main.____
 22. Man - na to the fa - thers sent.____
 24. Where the heav'n - ly feast thou show - est,
 Fel - low heirs and guests to be.____ A - men, al - le - lu - ia.

Text: *Lauda Sion Salvatorem*, St. Thomas Aquinas (1225-1274); tr. from the *Roman Missal*, © 1964 USCCB.

Tune: *Lauda Sion Salvatorem* (Irregular); Chant, Mode VII. Alternate settings by Brian Michael Page (b. 1964), © 2021 Christus Vincit Music.

Creative Commons License (ND-BY 4.0). cvmusic.christusvincit.com